

Environmental Specifications

| | |
|----------------------------|------------------------------------|
| Operating temperature | -20°C to +100°C (case temperature) |
| Start up temperature | -40°C to +100°C (case temperature) |
| Storage temperature | -40°C to +125°C |
| Overtemperature protection | 110°C max |

Ordering Information

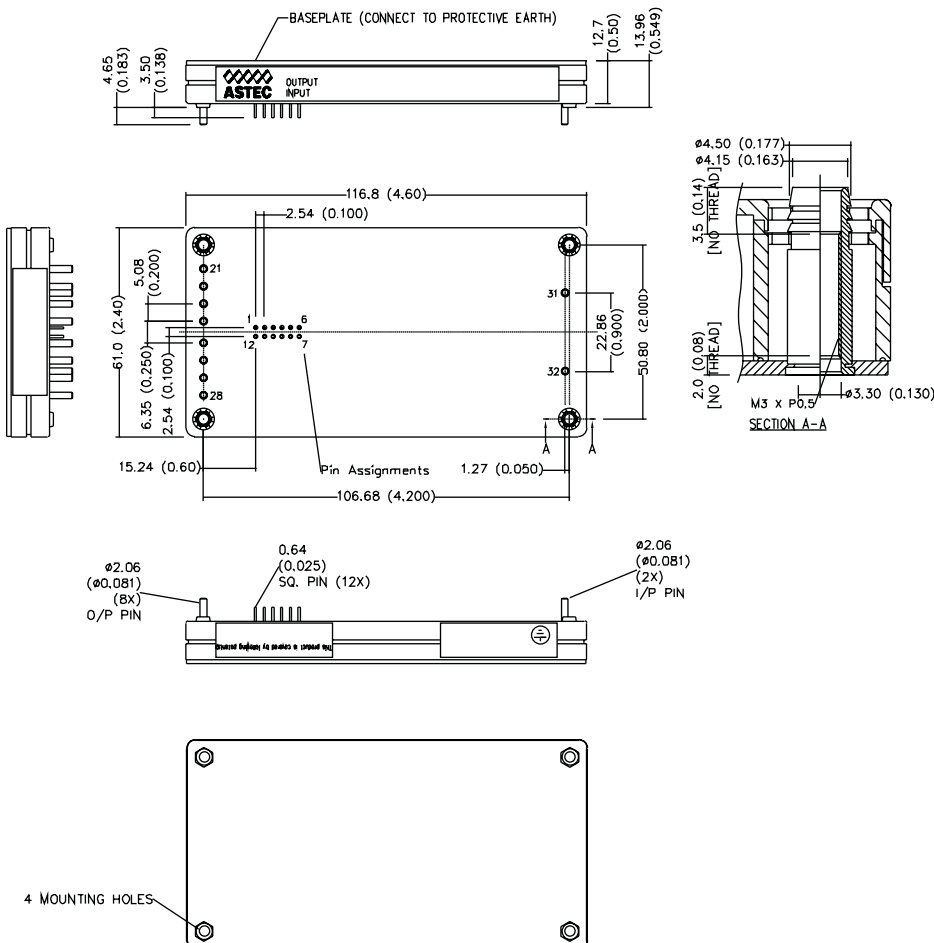
| Input Voltage | Output Voltage | Efficiency | Model Number |
|---------------|----------------|------------|--------------|
| 300V | 1.8V @ 120A | 80% (Typ) | AIF120Y300 |
| 300V | 3.3V @ 120A | 87% (Typ) | AIF120F300 |
| 300V | 5.0V @ 80A | 90% (Typ) | AIF80A300 |
| 300V | 12V @ 50A | 90% (Typ) | AIF50B300 |
| 300V | 15V @ 40A | 90% (Typ) | AIF40C300 |
| 300V | 24V @ 25A | 90% (Typ) | AIF25H300 |

1. For Negative enable, add suffix "-N".
2. For Non-thread hole, add suffix "-NT".
3. For RoHS 6, add suffix "-L". Default is RoHS 5.

Pin Assignments

| Input (AC) | Output (DC) | Control Pins |
|--------------|--------------|--------------|
| 31. Positive | 21. Positive | 1. +Sense |
| 32. Negative | 22. Positive | 2. Temp Mon |
| | 23. Positive | 3. C Mon |
| | 24. Positive | 4. C Share |
| | 25. Negative | 5. Clk Out |
| | 26. Negative | 6. Clk In |
| | 27. Negative | 7. PG/ID |
| | 28. Negative | 8. C Lim Adj |
| | | 9. OVP Adj |
| | | 10. V Adj |
| | | 11. Enable |
| | | 12. -Sense |

Mechanical Drawing



Americas

5810 Van Allen Way
Carlsbad, CA 92008
USA
Telephone: +1 760 930 4600
Facsimile: +1 760 930 0698

Europe (UK)

Waterfront Business Park
Merry Hill, Dudley
West Midlands, DY5 1LX
United Kingdom
Telephone: +44 (0) 1384 842 211
Facsimile: +44 (0) 1384 843 355

Asia (HK)

16th - 17th Floors, Lu Plaza
2 Wing Yip Street, Kwun Tong
Kowloon, Hong Kong
Telephone: +852 2176 3333
Facsimile: +852 2176 3888

For global contact, visit:

www.astecpower.com

www.artesyn.com

technicalsupport@astec.com

technicalsupport@artesyn.com

While every precaution has been taken to ensure accuracy and completeness in this literature, Emerson Network Power assumes no responsibility, and disclaims all liability for damages resulting from use of this information or for any errors or omissions.

Emerson Network Power.

The global leader in enabling
business-critical continuity.

- AC Power
- Connectivity
- DC Power
- Embedded Power**
- Inbound Power
- Integrated Cabinet Solutions
- Outside Plant
- Precision Cooling
- Site Monitoring and Services

EmersonNetworkPower.com